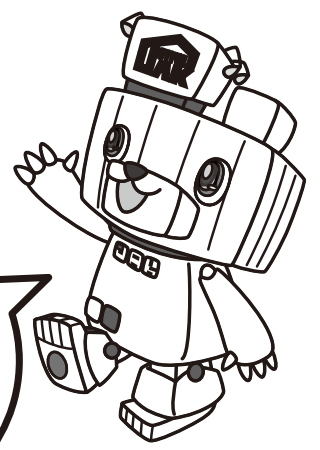


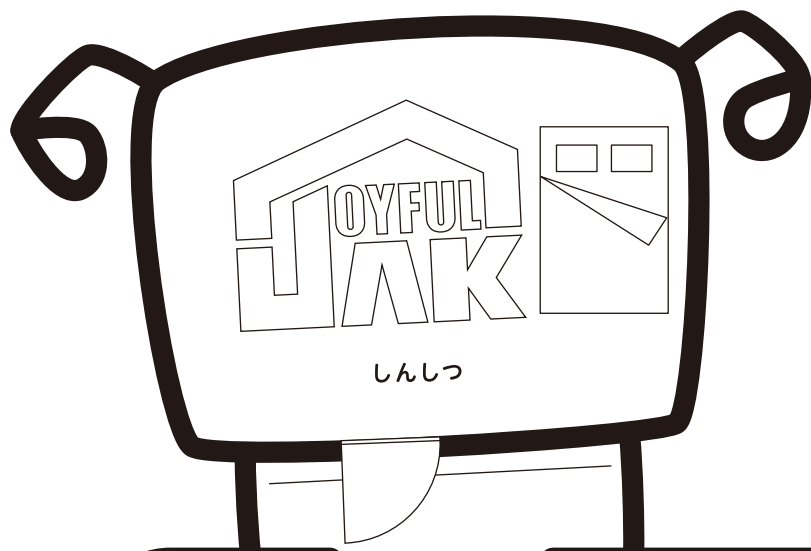
ジョイフルくんのお家<sup>うち</sup>

おそ<sup>う</sup>じ<sup>じ</sup> T O D O

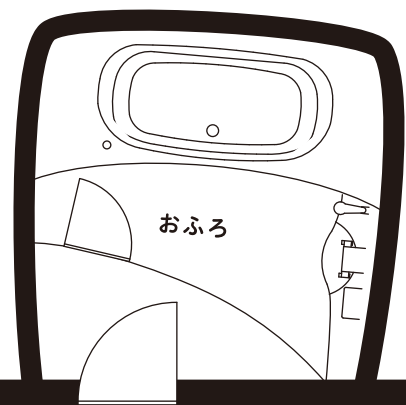
ぬ<sup>ぬ</sup> 塗<sup>え</sup> り 絵



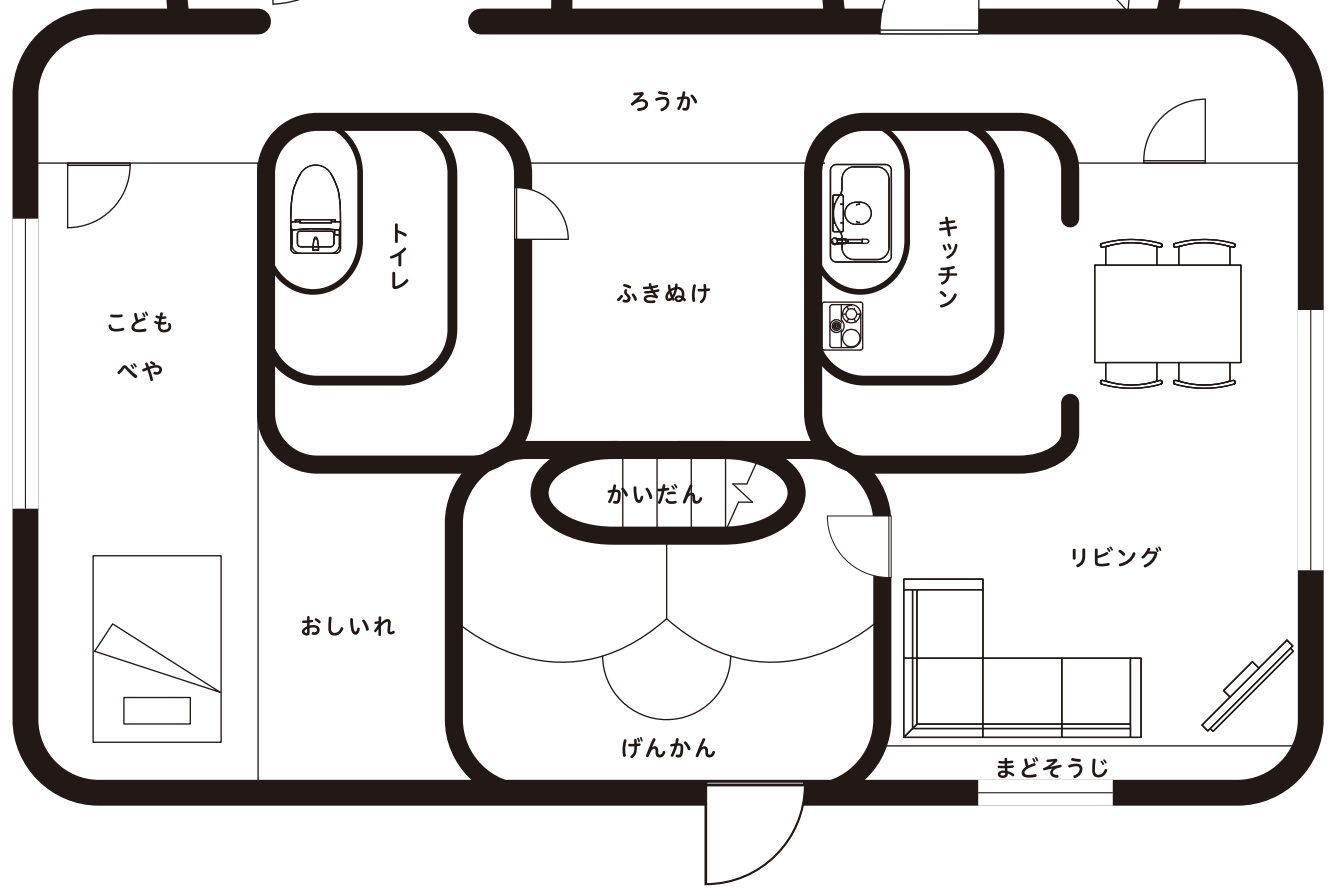
おそ<sup>う</sup>じが  
す<sup>す</sup> 済<sup>す</sup> んだ<sup>んだ</sup> と<sup>と</sup> こ<sup>こ</sup> ろ<sup>ろ</sup> を  
ぬ<sup>ぬ</sup> 塗<sup>え</sup> り<sup>り</sup> つ<sup>つ</sup> ぶ<sup>ぶ</sup> し<sup>し</sup> て  
ボク<sup>ボク</sup> を<sup>を</sup> 完<sup>かん</sup> 成<sup>せい</sup>  
さ<sup>さ</sup> せ<sup>せ</sup> る<sup>る</sup> ジョ<sup>じ</sup> イ<sup>い</sup>!



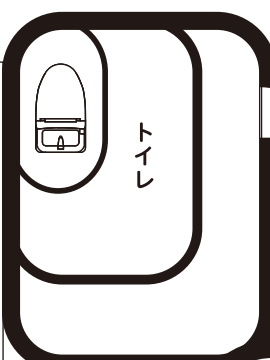
しんしつ



おふろ



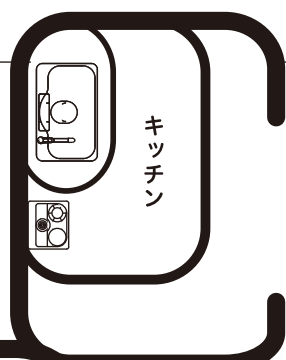
ろうか



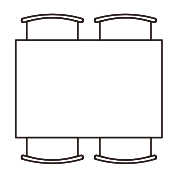
トイレ

こども  
べや

ふきぬけ

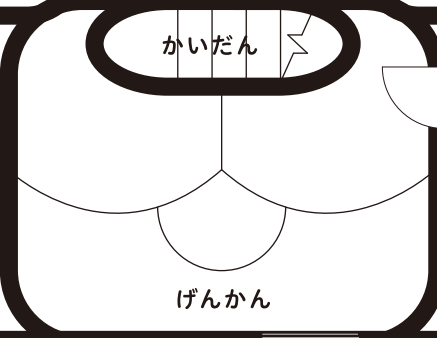


キッチン



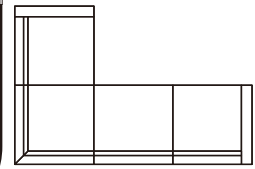
かいだん

おしいれ



げんかん

リビング



まどそうじ